



Strategic Planning

PARKS

Bartlett Park District Strategic Planning Process – 2021 to 2025

Strategic Area: Parks

Strategic Goal: Investigate new, non-traditional park concepts and amenities when master planning future parks

Committee Members:

Strategic Leaders: Kelly O’Brien and Rita Fletcher

Staff: Dan Touzios, Jessica Meyers, and Katie Mix



Park Site Selection Process

The district maintains 43 park sites, each containing unique features.

In order to determine which sites could benefit from more modern amenities or features, the selection of parks for future improvements was determined by a number of aspects:

- Current features and amenities
- Amount of open space available
- Current usage of park and its amenities



Park Selection

Based on the committee input on current park conditions, the committee decided to focus on the following parks listed below

Parks selected:

Prairieview Park

Green Meadows Park

Humbracht Park

Oak Grove Park

Leiseberg Park

Windy Oaks Park

Park District Bike Trails



Prairieview Park

250 Superior Cir.

11.8 acres, including pond area, adjacent to Prairieview school

Current amenities – Softball & T-ball field (underutilized, no scheduled program use within past 3 years)

Recommended Improvements

- Remove both existing softball field & t-ball field – Estimated cost: \$57,760.00
- Replace with Ninja Course – Estimated cost: \$86,125.00
- Establish trail: remove portions of pond buffer vegetation- Estimated cost: \$13,704.00



Total Estimated Cost: \$157,589.00

Green Meadows

1520 Stearns Rd.

3.43 acres, includes small retention area

Price: \$375,000



Current Amenities – Playground (Constructed 2002)

Recommended improvements

- Remove existing playground
- Install unique large staple structure due to high visibility location



Price: \$187,500



Total Estimated Cost: \$187,500.00 – \$375,000.00

Humbracht Park

1301 E. Struckman Blvd.

10.67 acres, Including Large pond area

Current Amenities – Playground (Constructed 2016), Soccer Field, Picnic Shelter, Pond Overlook

Recommended Improvements

– Enhance or improve existing scenic overlook deck – Estimated cost: \$38,000.00

Humbracht Park
1301 E. Struckman Boulevard



Total Estimated Cost: \$38,000.00

Oak Grove Park

600 W. Devon Ave

13.31 acres, including large pond area, and small woodland

Current Amenities – Playground (Constructed 2012), T-ball field

Recommended improvements

- Construct mulched nature trail through old growth woodland

Specialized mowing of proposed trail system - \$1,750.00

Clear and remove all old woodland debris - \$11,400.00

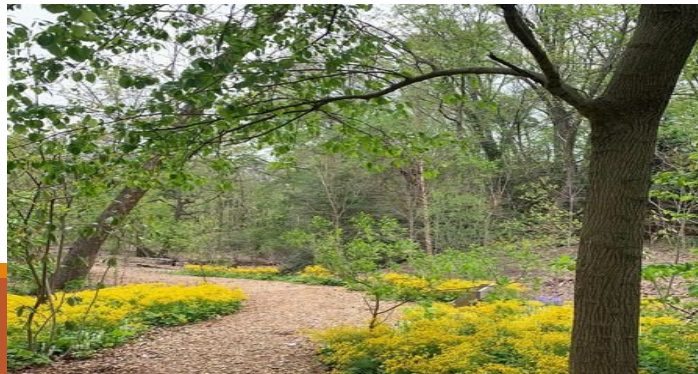
Woodchip installation to walking trail - \$4,568.00

- Remove all fallen or dead standing woodland debris from understory

- In-house additions of unique facial features to trees, making them appear to ‘come



Oak Grove Park
600 W. Devon Avenue



Total Estimated Cost: \$17,718.00

Leiseberg Park

325 E. Devon Ave.

12.0 acres, including small pond area with native surrounding buffer

Current Amenities – Playground (Constructed 2008), double tennis court, active spray pad, picnic shelter, walking path around pond, sled hill, ballfield, and parking lot

Recommended improvements

- Complete removal of ballfield - Estimated Cost: \$57,760.00
- Installation of bandshell to host hosting a variety of district events.

Estimated Cost of bandshell and installation: \$197,700.00

Recommend working with engineer to alter existing parking lot

Leiseberg Park
325 E. Devon Avenue



Total Estimated Cost: \$255,460.00

Windy Oaks Park

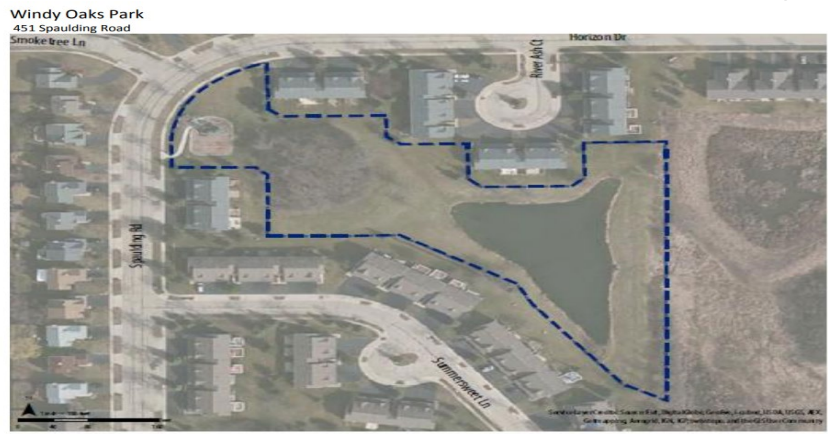
451 Spaulding Rd.

4.42 acres, including pond area and small woodland

Current Amenities – Playground (Constructed 2010)

Recommended Improvements

- Improve existing nature trail through woodland leading from playground area to pond
- Trim overhanging vegetation along woodland trail system ~ 10ft vertically.
- Remove all stumps present along woodland trail system.
- In-house additions of fairy doors for select trees, to inspire imagination.



Total Estimated Cost: \$6,600.00

Park District Bike Trails

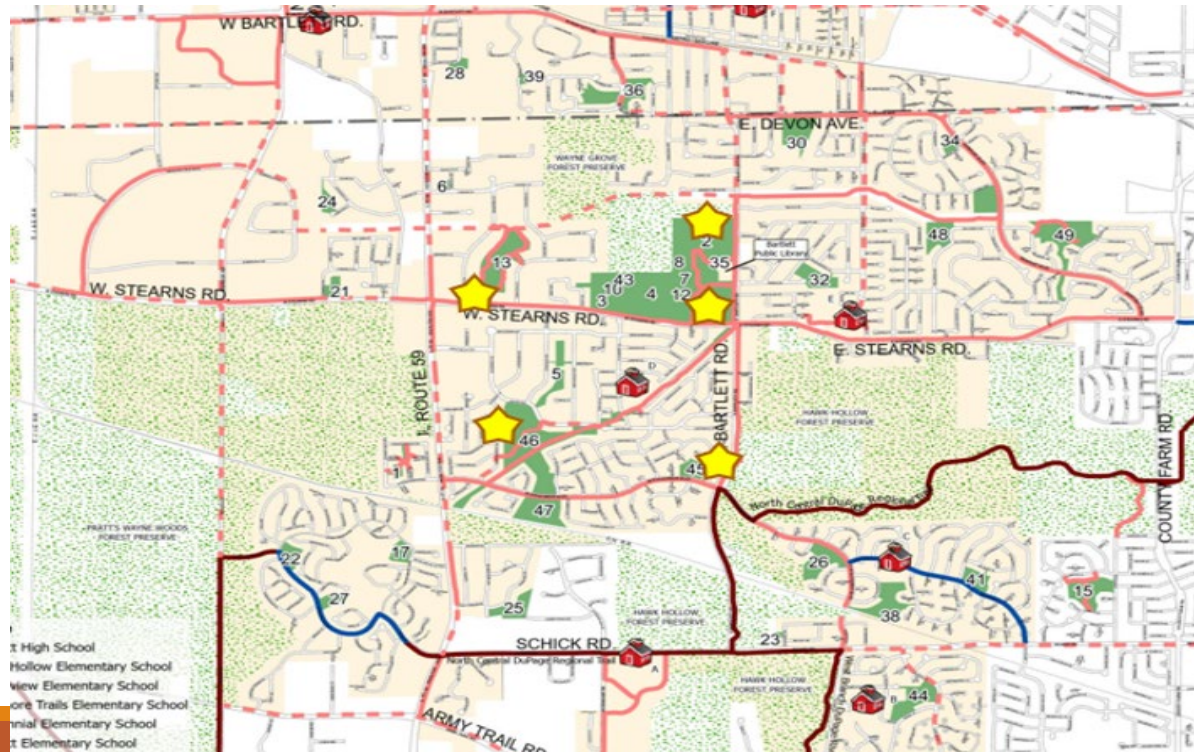
Trail sites for possible placement:

- Pipeline trail, South Bartlett Rd trail, Stearns Rd trail, and O'Brien Woods mulched trail.

Current amenities – few standard benches exist along district bike trial systems.

Recommended Improvements

- Install five swinging style benches along trail systems.



Recommended installation locations

Swing Style Benches



Estimated Cost: \$8,343.00

Total Estimated Cost: \$41,718.00

Concluding Notes

- Through careful detailed investigation of our current parks, we were able to realize that the district does currently provide many unique amenities for the community to enjoy. Going forward, the district will continue to investigate new and modern trends in order to further expand the communities recreational opportunities.

QUESTIONS.....

